

Advance Care Planning from Primary Palliative Care Affected with the Place of Death in Patients with mCRC Managed by the Cancer Support Team

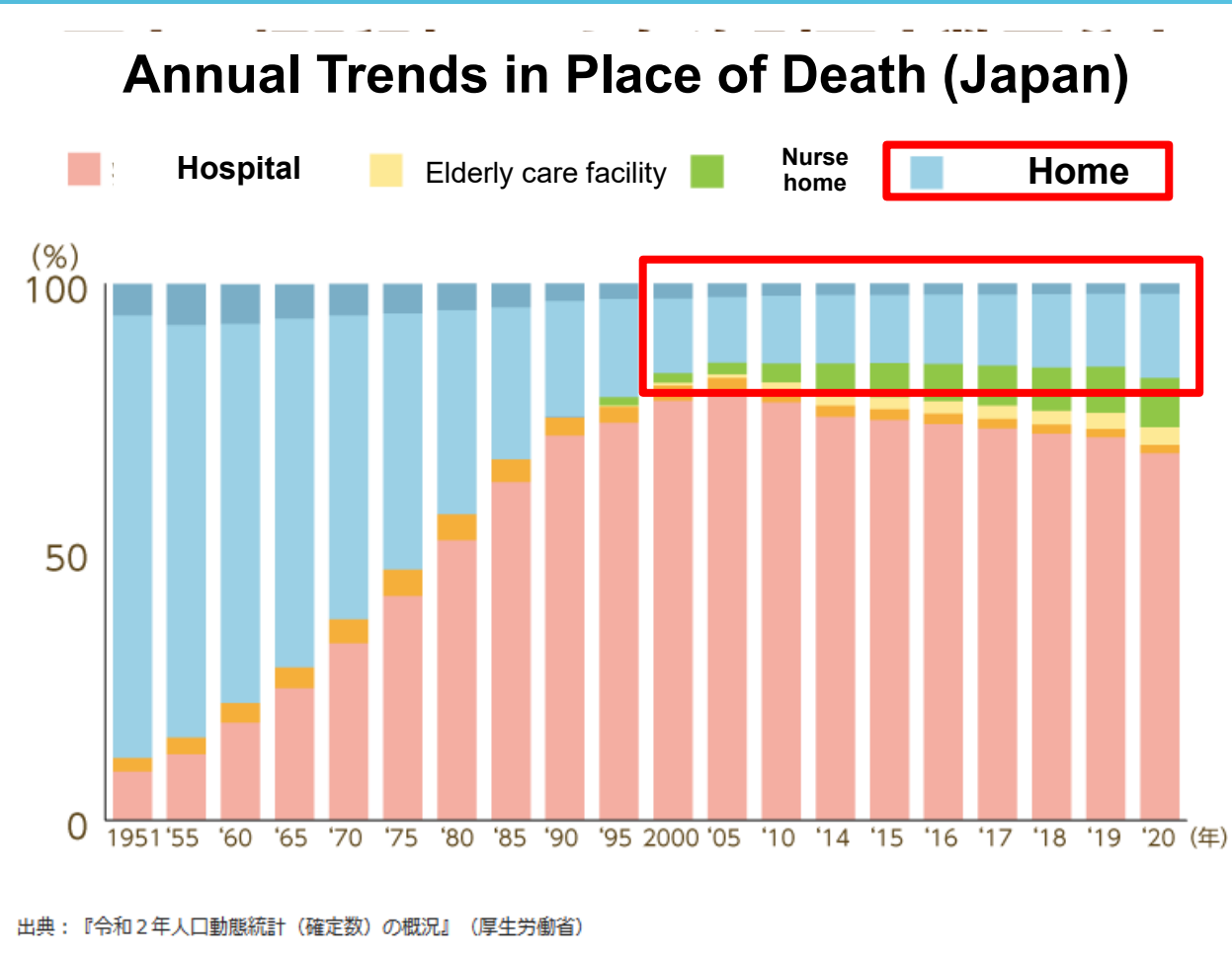
Shingo Ito^{1,2}, Yukiya Sakamoto¹, Masahiro Takahashi¹, Yuka Mizushima¹, Takahiro Yamamoto¹, Shota Akabane¹, Takaaki Murata¹, Yuma Suno¹, Rai Shimoyama¹, Kei Hosoda¹, Shoichi Fujii¹
1 Shonan Kamakura General Hospital, Department of Surgery, Japan 2 The Second Kawasaki Saiwai Clinic, Japan

Background

Ranking of Countries by Percentage of Deaths at Home

1	Greece	49.5%
2	Italy	49.4%
3	Poland	42.5%
4	Netherlands	36.8%
5	Germany	32.7%
6	France	25.7%
7	Sweden	21.9%
8	United Kingdom	18%
9	Japan	13%

Health Affairs 2017, 1201-1210



While ACP is crucial for facilitating home death, only 17% of physicians are currently engaging in it appropriately.

2022 Survey Report on Attitudes Toward End-of-Life Medical Care

Material and Method

Multidisciplinary Approach



MULTI-PROFESSIONAL JOINT CONFERENCES



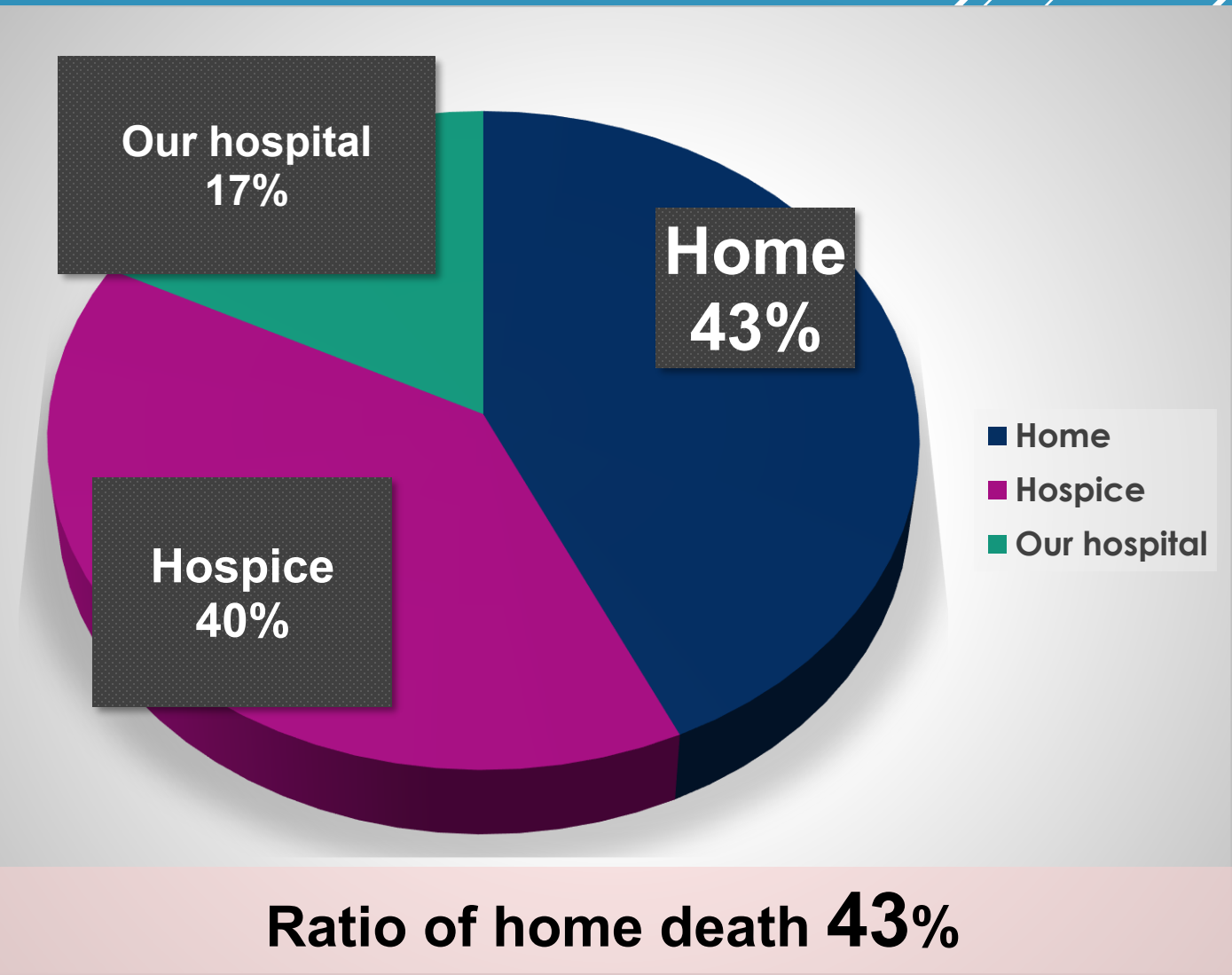
Sharing information on medical conditions and treatment plans

Retrospective Analysis

From 2013 to 2022

140 stage IV colorectal cancer at our institution

Place of Death n = 109



Conducted by non-physician staff.

Early palliative care and ACP

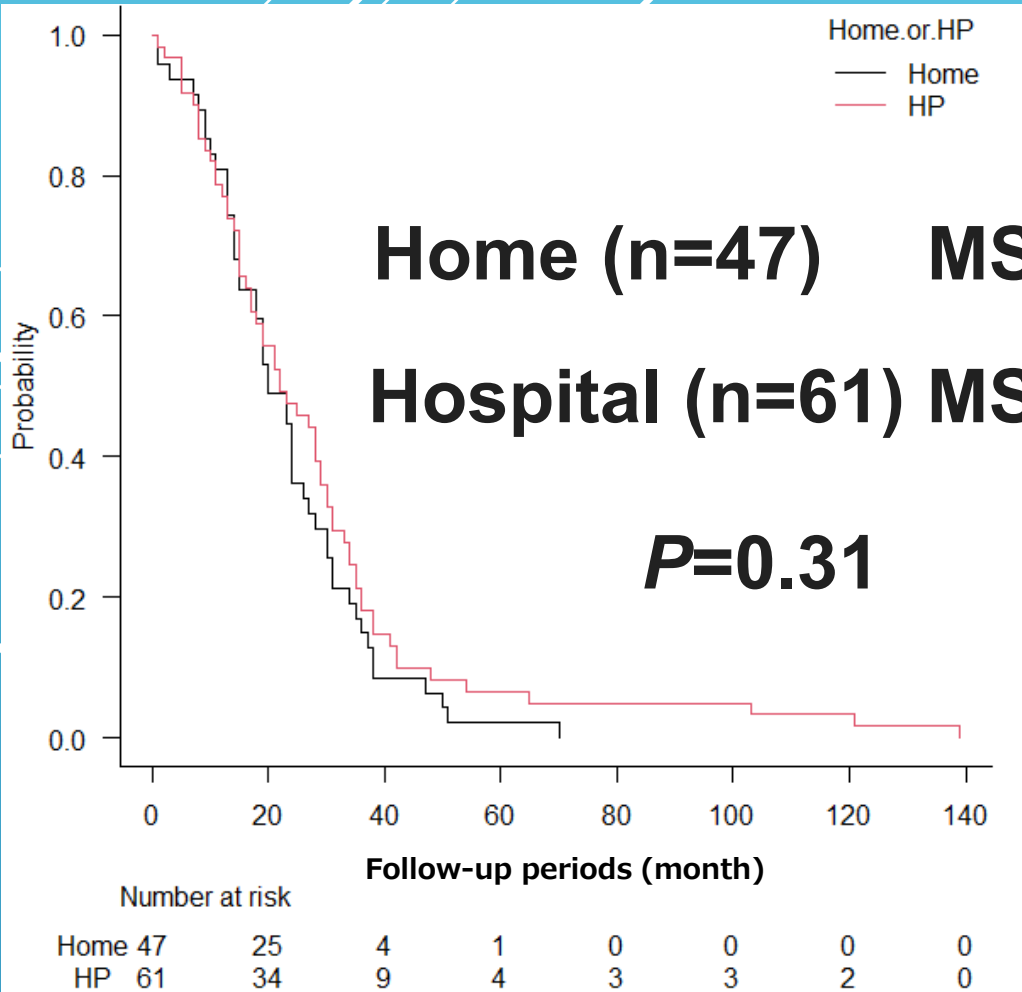
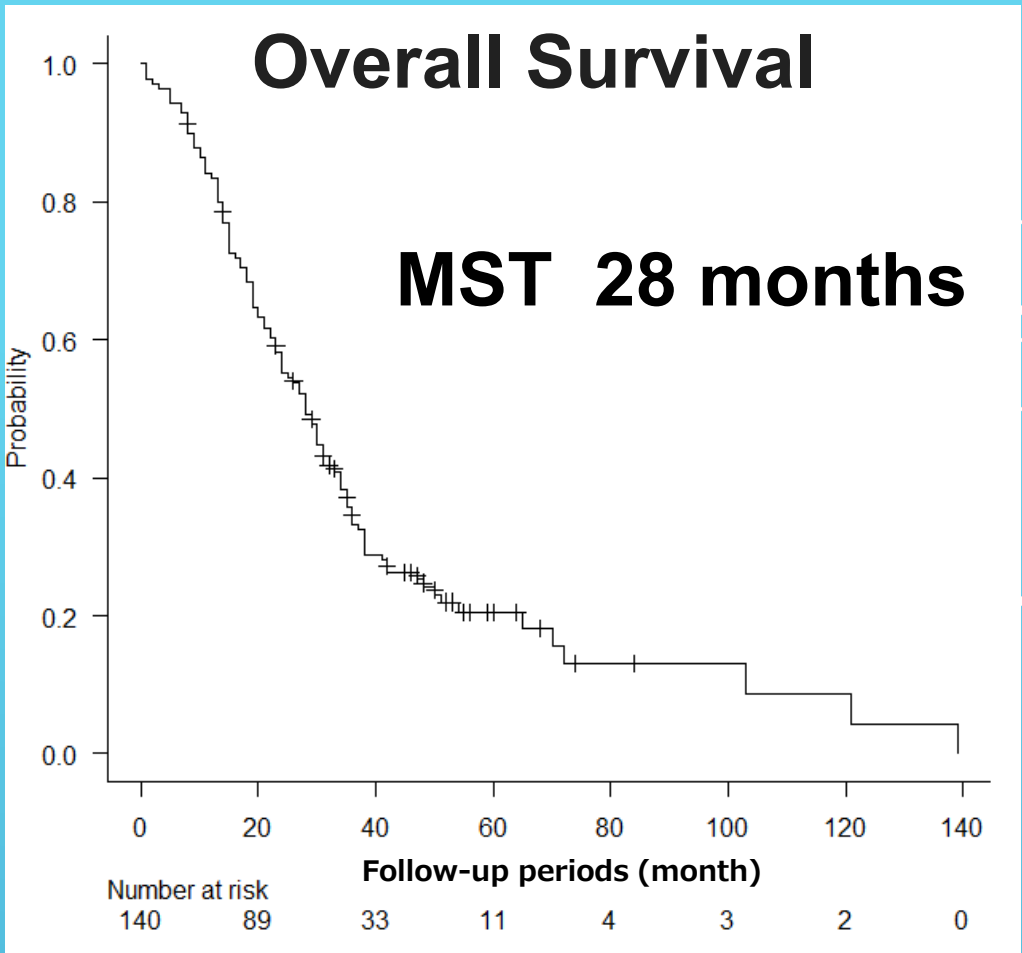
Conclusion

Early ACP implementation by multidisciplinary teams helps clarify and fulfill EOL preferences for patients with advanced CRC.

Result

n=140

Male / Female	96 / 44
Age	66 (30 - 89)
Stage (I / II / III / IV)	3 / 6 / 32 / 99
Pathology (tub1,2 / por, sig, muc)	110 / 30
RAS Wlild / Mutant	63 / 77
BRAF / MSI-H	V600E 4 / 0
Primary tumor resection / R0	106 (75.7%) / 34 (24.3%)
Metastatic organ (1/2/ over 3)	86 / 30 / 24
Liver / Lung / Peritneum / Lymph	33 / 8 / 43 / 29



Review Article

Overview of Systematic Reviews of Advance Care Planning: Summary of Evidence and Global Lessons

Table 3 ACP Interventions and Outcomes Summary		
Type of Intervention	Outcome	Ref. Examples
ACP (broadly conceptualized), associated with:	Improved surrogate and patient's wishes concordance	53,72
	Concordance between wishes and received care (for some groups of patients)	55,91
	Higher incidence for preferred place of death (for some groups of patients)	59,91
	Increased ACP-related documentation	92
	Increased occurrence of discussions	18,37,55,71,92
Different types of ACP interventions/different interventions impacting ACP	Decreased use of unwanted life-sustaining treatments	55,91
	Lower use of resources and hospitalization rates	59,88,91,92
	Facilitated documentation of preferences; enhanced communication between patients and surrogates	12
	Increased AD completion	64,75,76
	Improved knowledge about ADs, ACP treatment options and goals of care	9,51,81,82
Decision aids/communication interventions	Increased AD completion and ACP status and discussions	9,82
	Decreased decisional conflict	9,51
	Improved skills, comfort, preparedness and knowledge about ACP for health professionals	12,80
	Increased AD completion and occurrence of EOL discussions	85,86
	Associated with decreased use of CPR; increased use of hospice and palliative care	84
AD/DNR/DNH, and so on, interventions	Decrease in life-sustaining treatments	84
	Increased occurrence of ACP decisions, completion of ADs, and	10
ACP complex interventions	Increased frequency of out-of-hospital and out-of-ICU care	87
		12
ACP		Reduce the hospital death rate; Higher incidence for preferred place of death

ACP = advance care planning; AD = advance directive; CPR = cardiopulmonary resuscitation; DNR = Do-Not-Resuscitate; DNH = Do-Not-Hospitalize; EOL = end-of-life.