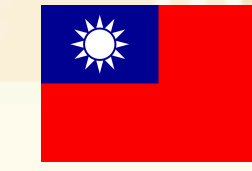


Care Experience of a Patient with End-Stage Tongue Cancer

PALLIATIVE CARE



亞東紀念醫院
FAR EASTERN MEMORIAL HOSPITAL



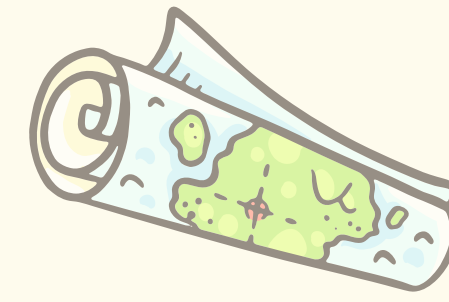
BAOSHANG WANG, NURSE

OBJECTIVE

Cancer is the leading cause of death globally, and tongue cancer is one of the most common forms of oral cancer. The patient, a 46-year-old male, was initially diagnosed with squamous cell carcinoma of the tongue. Despite aggressive treatment for a year, his condition rapidly deteriorated. His role in the family shifted from the primary decision-maker and financial provider to that of a care recipient. This transition brought about feelings of guilt and regret toward his wife and parents. As he faced death, anticipatory grief arose. Through re-evaluating the meaning of life and providing appropriate nursing care, the patient and his family were able to complete the final chapter of his life.

METHOD

Between February 4 and February 27, 2024, the author conducted nursing care using a holistic assessment framework encompassing four key domains: physical, psychological, spiritual, and family-social aspects. The main health issues identified during care included: chronic pain (related to cancer metastasis), respiratory distress (due to lung infection), and anticipatory grief (related to disease progression and approaching death).



TRAVEL

TIME

RESULTS

Tailored nursing interventions were provided based on the patient's individual needs. These included muscle massage and aromatherapy to alleviate pain and breathing difficulties. Virtual travel experiences were created using photos and videos, fulfilling the patient's dream of traveling and exploring the world despite his physical limitations. Along with the palliative care team, the patient and family participated in the "Four Life's Journeys" (Thank You, Apologize, I Love You, Goodbye) to reflect on the patient's life. During this process, the care team offered empathy, companionship, active listening, acceptance, and a non-judgmental attitude, supporting both the patient and family in confronting the end-of-life process.

CONCLUSION

The emotional transition of patients in the terminal stages of cancer requires prolonged companionship and listening. Clinical work can often be interrupted due to busy schedules, yet the delicate nature of human interaction and relationship-building stands out in nursing practice. The warmth provided to the patient and family, and the feedback received, are deeply meaningful. This embodies the unique role of nursing and highlights the essential functions of nursing care.



THANKS

APOLOGIZE

LOVE

GOOD BYE



精神：誠勤樸慎 創新

宗旨：持續提升醫療品質 善盡社會醫療責任

願景：成為民眾首選的醫學中心

SPIRIT: HONESTY, DILIGENCE, PRUDENCE, INNOVATION

MISSION: CONTINUOUSLY IMPROVE MEDICAL QUALITY AND FULFILL SOCIAL MEDICAL RESPONSIBILITIES

VISION: BECOME THE FIRST CHOICE MEDICAL CENTER FOR THE PUBLIC