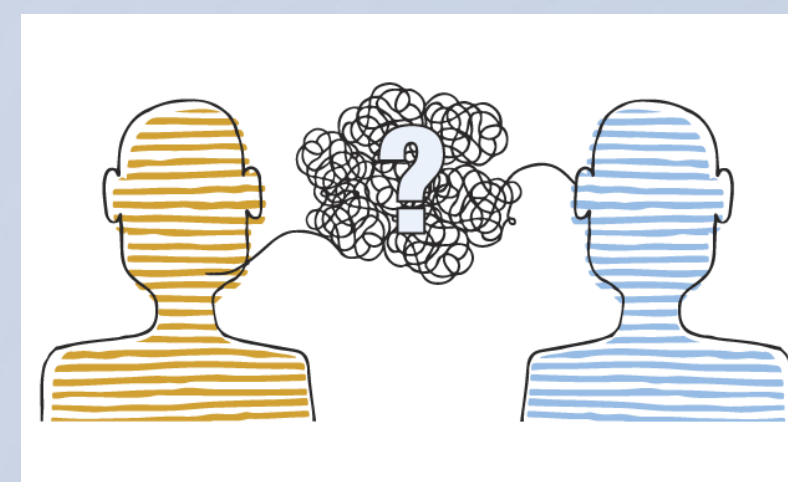


INTRODUCTION

Oncology Pharmacists providing care for cancer patients need access to the **medication history**, act to **prevent drug-drug** and herb-drug interaction (HDI), **educate patients** on **detection and management of adverse effects** (AE) through **proper use of supportive care**.

However, **language barriers** are common in multicultural societies and could be challenging for oncology pharmacists, especially in case with less spoken languages, making communication challenging with no interpreter available. We aimed to **design** and **validate** a **set of illustrations** addressing these major topics.



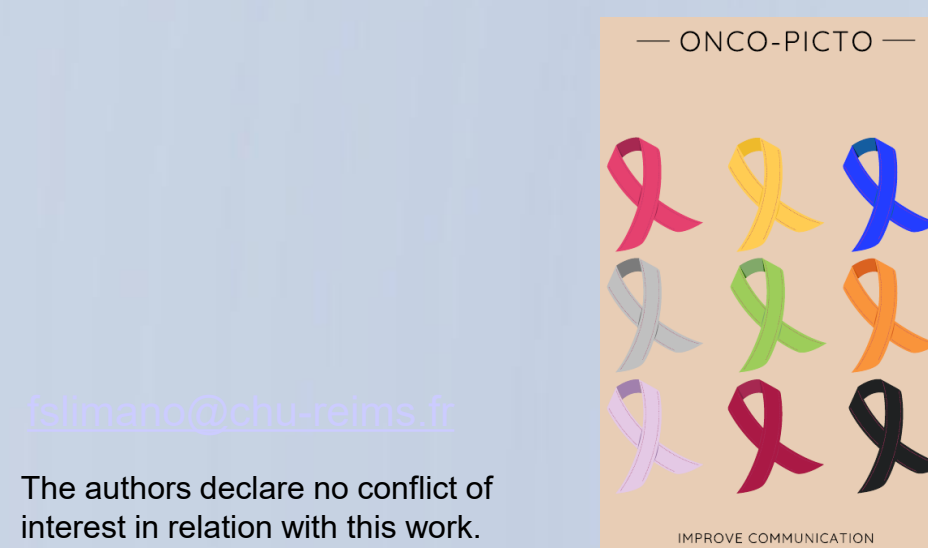
METHODS

The design of the pictures (card format) was led by 3 pharmacists → **three topics**:

- I. **General information** (e.g. medication history)
- II. **Problems detection** (e.g. AE of anticancer treatments, HDI)
- III. **Proper use of supportive care** (e.g. mouthwash)

Illustrations were drawn using Canva (Canva Pty Ltd). The validation of each underwent a **two-steps validation process**:

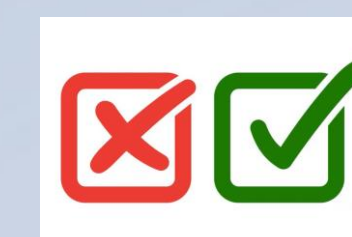
- Within on-site **oncology pharmacists** (using Woodclap®, agreement or disagreement with a recommendation)
- with a **large and multidisciplinary panel**: **oncologists**, **general practitioners**, **oncology nurses**, community / hospital **pharmacists** / technicians, **patients** (by email using a Google® Form, based on a **Likert-scale with 9 points**).



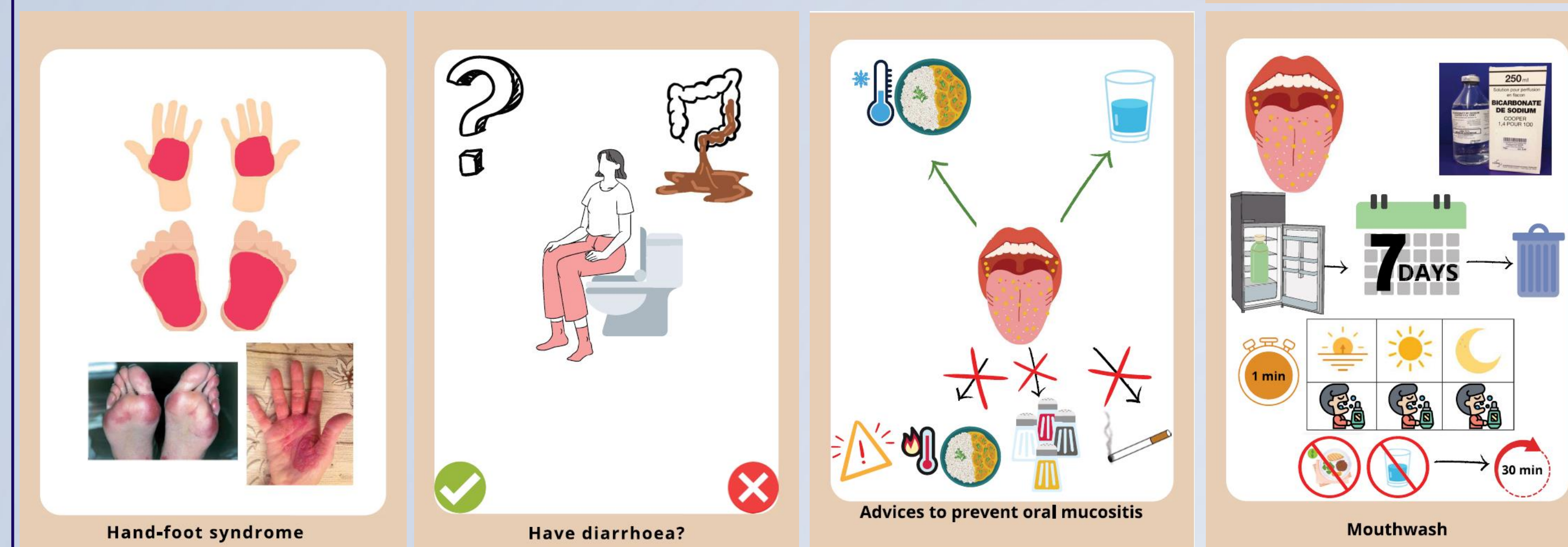
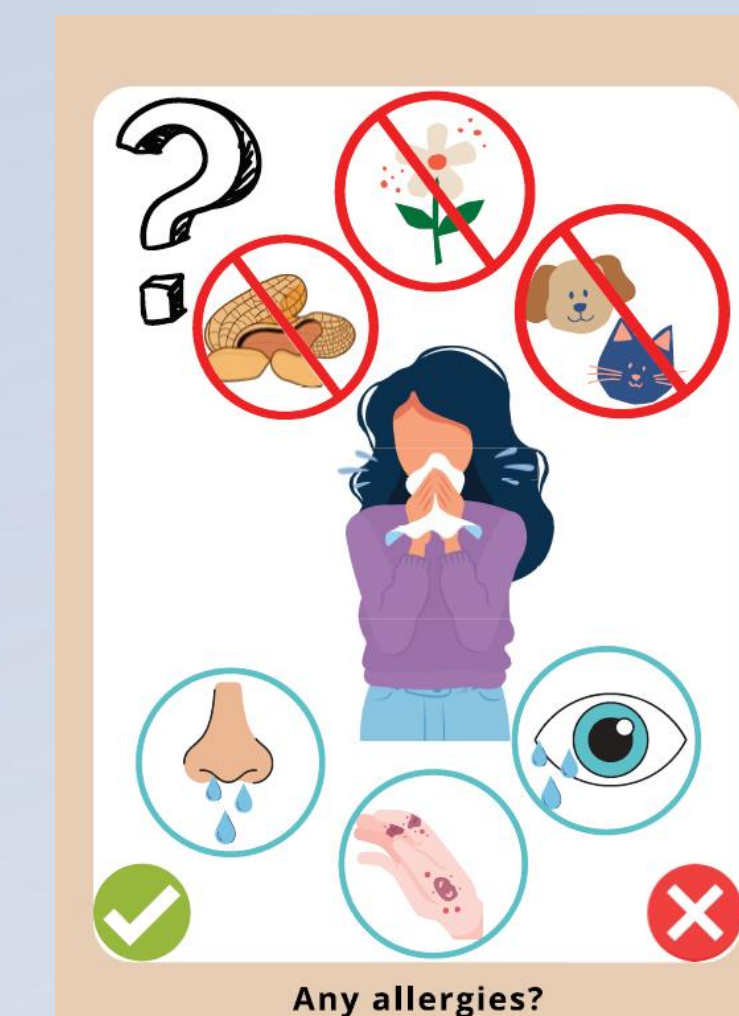
RESULTS

53 cards were initially designed: 16 for topic I, 16 for topic II, 21 for topic III.

- The cards were initially evaluated by 19 pharmacists who **fully approved 18/53** and provided recommendations for the others.



- Then the panel of 27 respondents rated the 53 cards:
 - After the first round, the mean \pm standard deviation was **7.37 \pm 1.2** with all but five cards were rated >6 and being validated at this stage.
 - Clarity of four cards (weight gain/loss, herbs consumption, peripheral neuropathy) was improved while one (St John's wort consumption) was ultimately removed.
 - The four revised cards were then resubmitted and received approval → **52 cards finally approved**



CONCLUSIONS

A final set of **52 validated cards** will help improving pharmaceutical care for cancer patients facing language barrier. The set can be print and shared to community needs.

REFERENCES

Haute Autorité de Santé [French National Authority for Health]. Elaboration de recommandations de bonne pratique. Méthode « recommandations par consensus formalisé ». V2010. Available on: https://www.has-santé.fr/IMG/pdf/recommandations_bonne_pratique_methode_consensus_formalise_v2010.pdf (accessed Sep 1st 2023)

