

Impact of Mandibulectomy on Bite Function and Oral Health-Related Quality of Life: A Comparative Analysis



Van Lint Lina¹, Van den Bergh F², Dierick E², Christiaens L¹, Van Dessel J¹, Willaert R¹, Bila M¹, Helderop P³, Christiaens V²

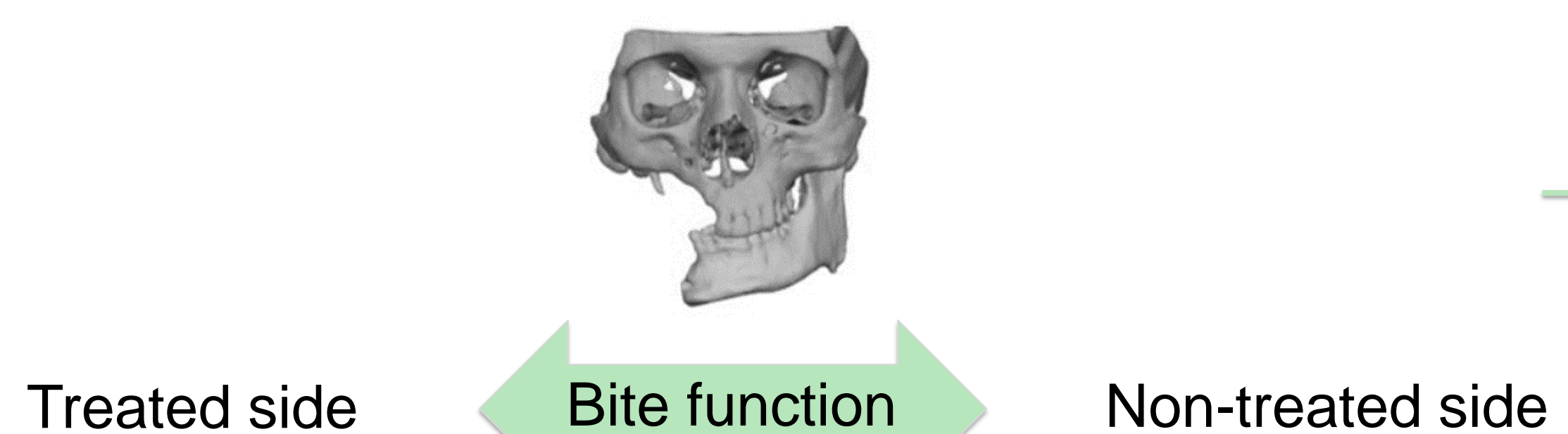
¹Department of Oral and Maxillofacial Surgery, University Hospitals Leuven and OMFS IMPATH Research Group, Department of Imaging & Pathology, Faculty of Medicine, KU Leuven, Leuven, Belgium, ²Department of Periodontology and Oral Implantology, Faculty of Medicine and Health Sciences, Oral Health Sciences, Ghent University, Ghent, Belgium, ³Logopediepraktijk Peter Helderop, Vlaardingen, The Netherlands

BACKGROUND

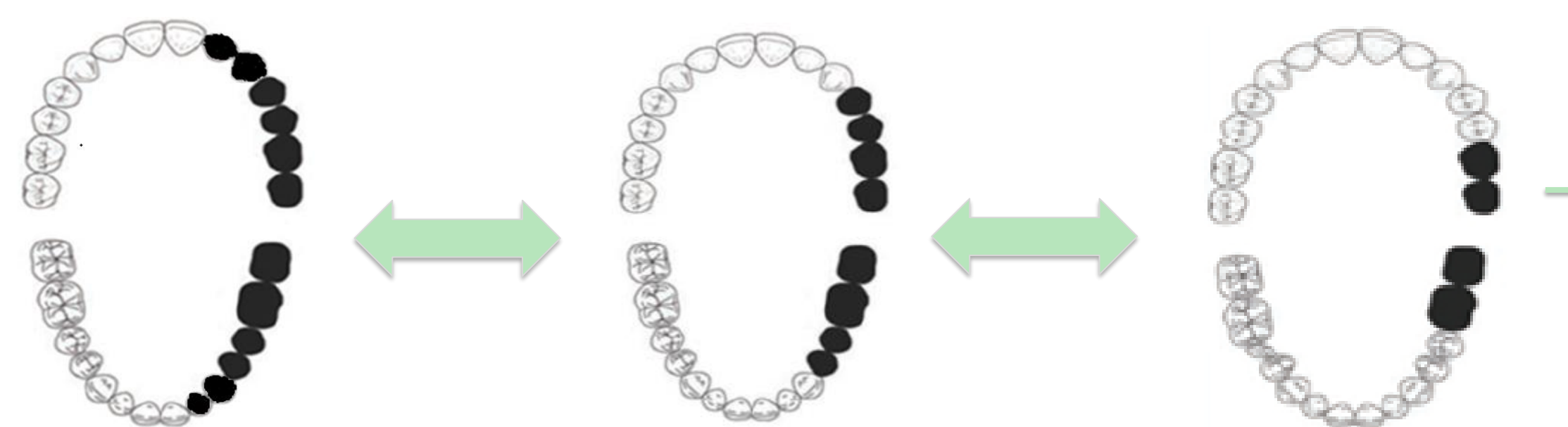
- Mandibulectomy stands as a pivotal therapeutic modality in addressing oral cancer.
- Despite surgical reconstruction, full bite function restoration post-mandibulectomy is often incomplete.
- Literature lacks standardized and validated devices to objectify this bite function.
- In light of the increasing emphasis on quality of life (QoL), it is crucial to incorporate patient's subjective experience as well.
- Bite function after mandibulectomy needs more attention, integrating both patient-reported experiences and novel objective measures.

AIMS

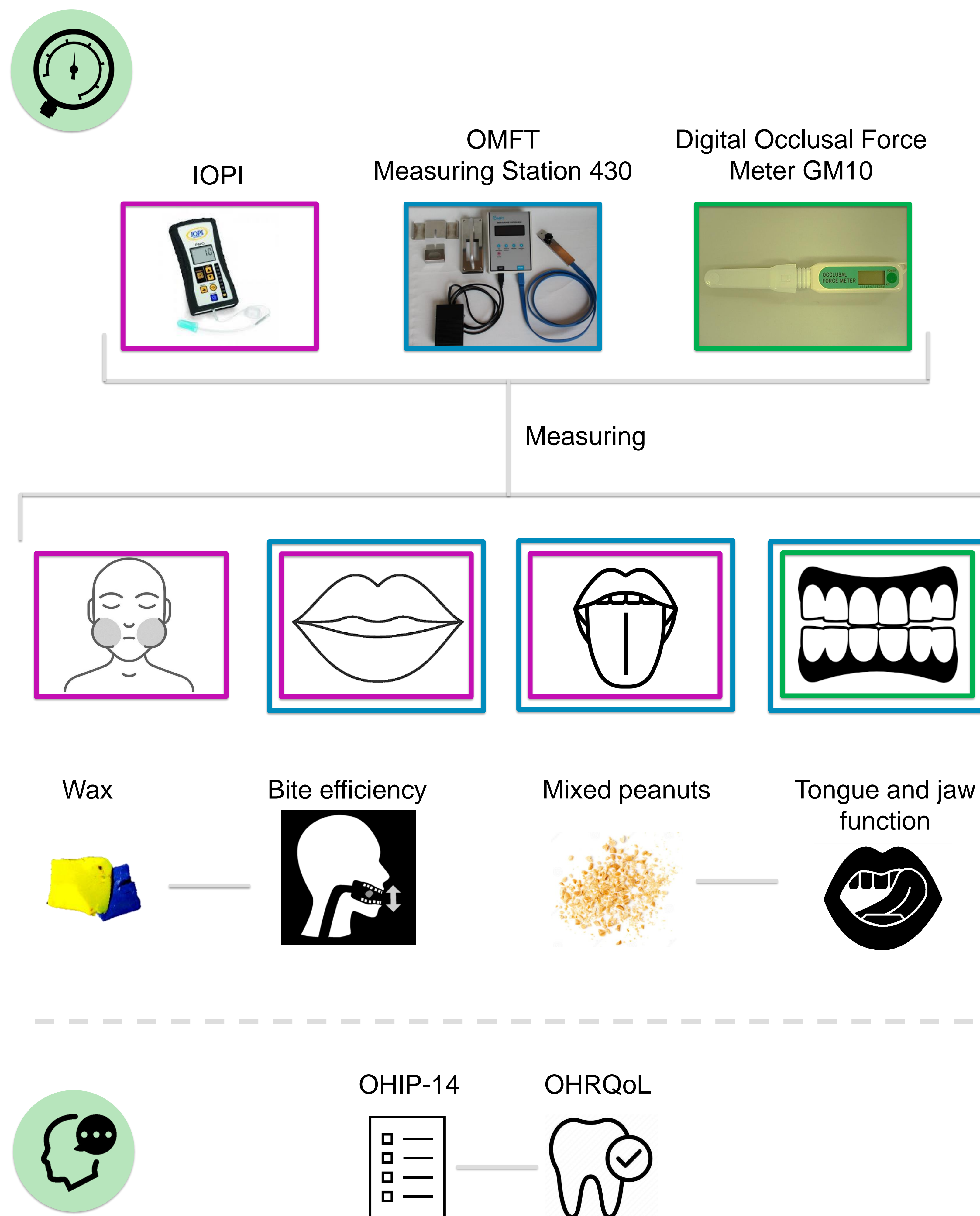
Influence of MANDIBULECTOMY



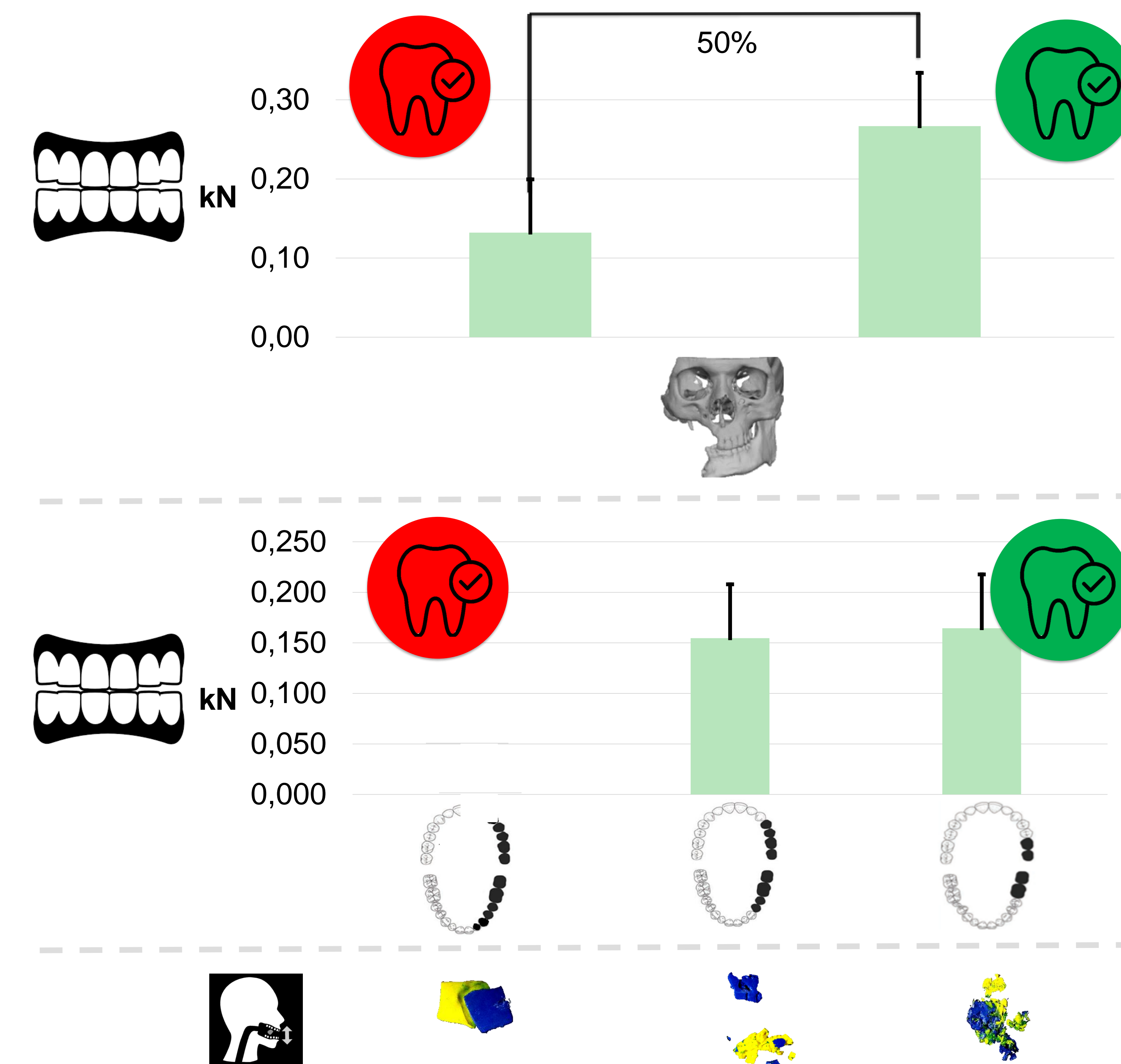
Influence of DENTAL ARCH LENGTH



MATERIAL & METHODS



RESULTS



CONCLUSION

- Bite force and efficiency notably diminished after segmental unilateral mandibulectomy
- A more pronounced reduction in bite force and efficiency is observed in cases of a shorter dental arch
- Segmental unilateral mandibulectomy affects patients' OHRQoL, with a worse OHRQoL among patients with a shorter dental arch

lina.vanlint@kuleuven.be

Thanks to



Presented at



Annual Meeting

No potential conflict of interest