



Palliative Radiation Therapy For Inuit Patients from the Canadian Arctic Territory of Nunavut: A 10 Year Review

K. Dennis¹, J.P.K. Chan¹, K. Linden², C. McGrath³, J. Renaud², P. Doering⁴, S. MacDonald⁵, M. Gaudet¹, J. Pantarotto¹, T. Asmis⁶

¹The Ottawa Hospital and the University of Ottawa, Division of Radiation Oncology, Ottawa Ontario, Canada

²The Ottawa Hospital, Radiation Medicine Program, Ottawa Ontario, Canada

³University of Ottawa, Faculty of Science, Ottawa Ontario, Canada

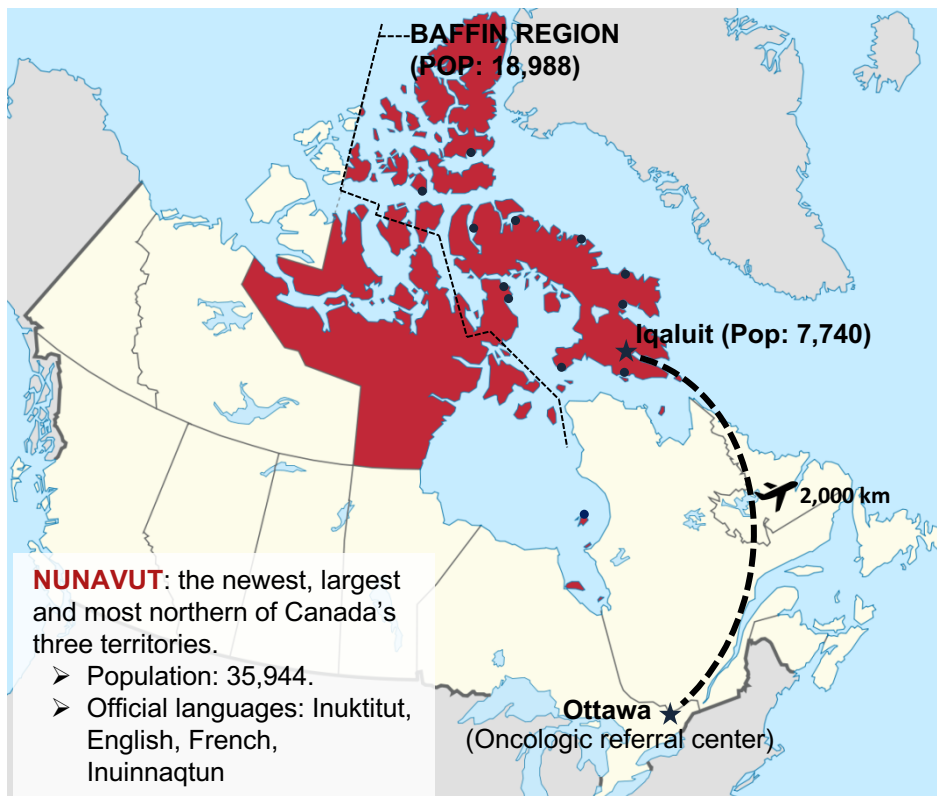
⁴The Ottawa Hospital, Regional Cancer Program, Ottawa Ontario, Canada

⁵Department of Health, Government of Nunavut, Iqaluit, Nunavut, Canada

⁶The Ottawa Hospital and the University of Ottawa, Division of Medical Oncology, Ottawa Ontario, Canada

BACKGROUND

- Canadian Inuit have the highest rate of lung cancer in the world,^{1,2} with lower survival rates compared to the rest of Canada.²
- Significant barriers exist to accessing timely oncologic care. Delays in presentation, diagnosis and travel make late stage presentations common.³
- Palliative radiotherapy is effective in helping control many symptoms in advanced cancers.⁴ However, there is currently no data on the use of palliative radiotherapy or its outcomes among this unique population.



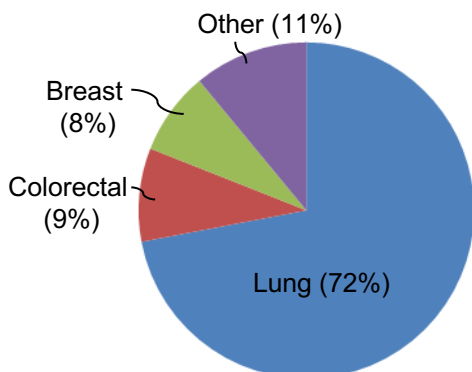
METHODS

- Retrospective chart review of adult Inuit patients from the Baffin region of Nunavut who were treated with palliative radiotherapy at The Ottawa Hospital between 2005 to 2014, inclusive.

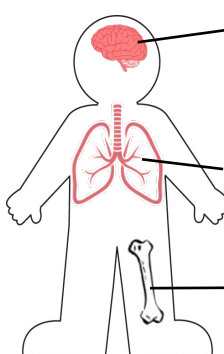
RESULTS

- A total of 152 Inuit patients from Nunavut treated with radiotherapy between 2005 to 2014.
- Among those, 88 (58%) patients received 169 courses of palliative radiotherapy
 - 53% male, 47% female
 - Mean age: 62 years (range 27–89 years)
- Median time from a decision to treat to start of radiation treatment was 7 days (range 0-139 days)

Types of cancers among Inuit patients treated with palliative radiotherapy



Median and range of radiation doses and fractions given to different sites



- Brain metastases:** Total of 24 courses
 - 17 whole brain treatments (median dose 20Gy, range 20-30Gy)
 - 7 treated with stereotactic radiotherapy
- Thoracic treatments:** Total of 59 courses
 - Median dose: 20Gy (range 3.5-40Gy)
 - Median number of fractions: 5 (range 1-5)
- Bony metastases:** Total of 67 courses
 - Median dose: 20Gy (range 5-35Gy)
 - Median number of fractions: 5 (range 1-10)

CONCLUSIONS

- This is the first study to describe patterns of treatment of palliative radiotherapy among Canadian Inuit.
- Canadian Inuit patients with cancer have a similar demographic and epidemiological pattern as other Inuit populations worldwide, with higher rates of lung and colorectal cancers.²
- An in-depth analysis of oncologic outcomes, as well as operational and resource issues is ongoing in cooperation with the Nunavut Department of Health.

REFERENCES

1. Kelly J, Lanier A, Santos M, et al. on behalf of the Circumpolar Inuit Cancer Review Working Group. Cancer among the circumpolar Inuit, 1989–2003. ii. Patterns and trends. *Int J Circumpolar Health* 2008;67:408–20.
2. Carriere GM, Tjepkema M, Pennock J, et al. Cancer patterns in Inuit Nunangat: 1998–2007. *Int J Circumpolar Health* 2012;71:18581.
3. Jensen RG, Friberg J, Rosborg J, et al. Survival of head and neck cancer in Greenland. *Int J Circumpolar Health* 2010;69:373–82.
4. Jones JA, Simone CB. Palliative radiotherapy for advanced malignancies in a changing oncologic landscape: guiding principles and practice implementation. *Ann Palliat Med* 2014;3:192–202.